

MONTHLY MEMBERSHIP PROGRESS REPORT

LOCATION INDIA

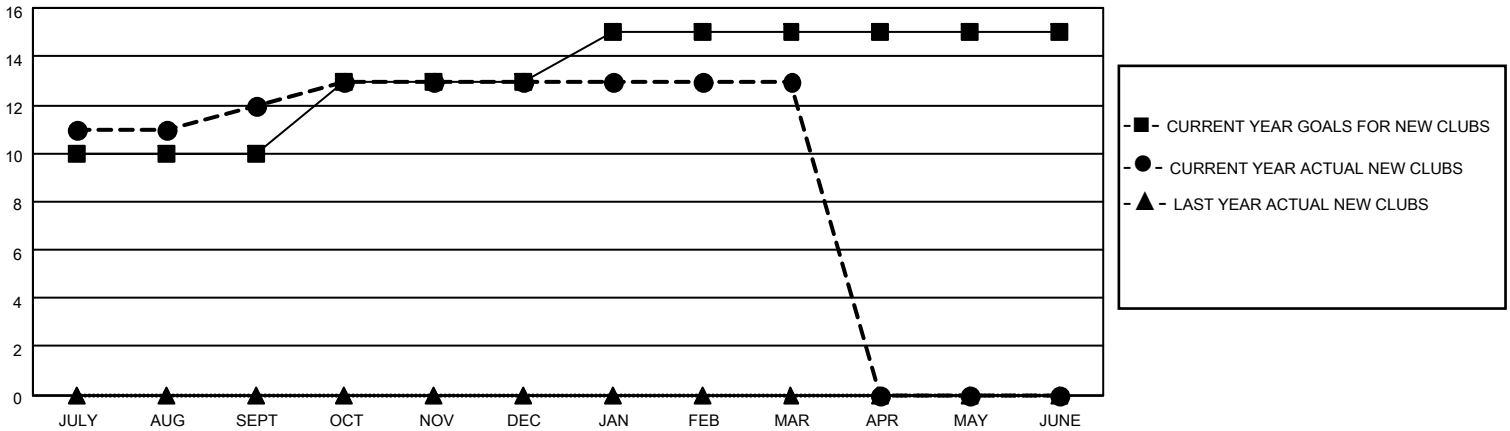
District 322 F

Results as of: 3/31/2023

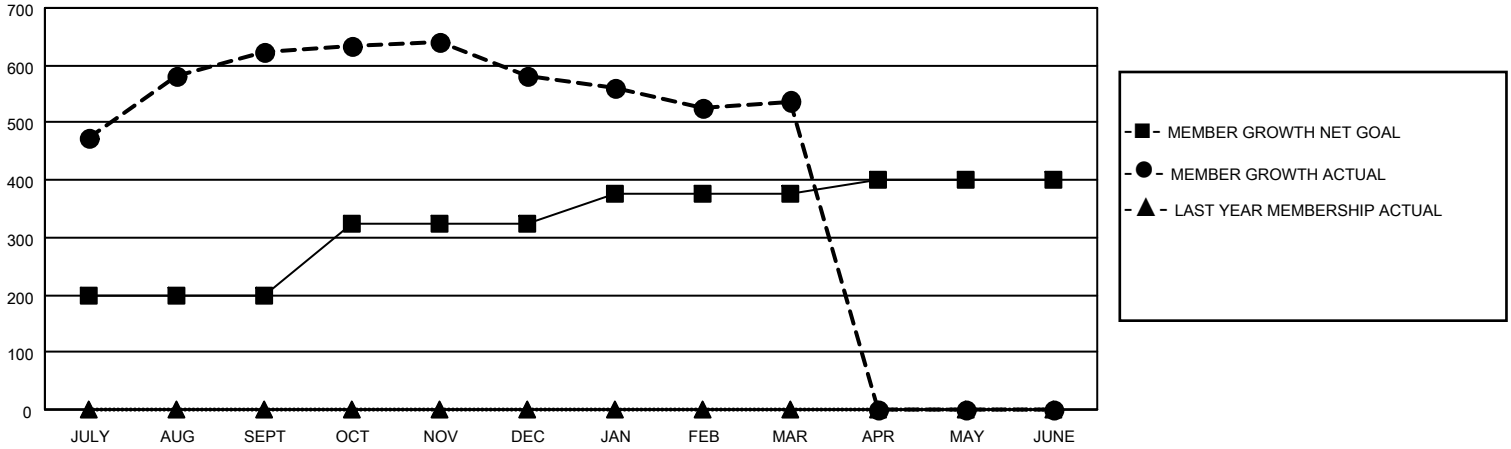
Clubs			
RESULTS FOR 2022-2023			
QUARTER	NEW CLUB GOAL	NEW CLUBS	DROPPED CLUBS
JULY/AUG/SEPT	10	12	0
OCT/NOV/DEC	3	1	3
JAN/FEB/MAR	2	0	2
APR/MAY/JUNE	0	0	0

Members			
RESULTS FOR 2022-2023			
QUARTER	MEMBER GROWTH NET GOAL	MEMBER GROWTH ACTUAL	DROPPED MEMBERS ACTUAL (including transfers)
JULY/AUG/SEPT	200	672	45
OCT/NOV/DEC	125	71	108
JAN/FEB/MAR	50	79	92
APR/MAY/JUNE	25	0	0

GOALS AND ACTUAL NEW CLUBS CUMULATIVE



GOALS AND ACTUAL MEMBERS CUMULATIVE



DROPPED CLUBS: 5

79 CLUBS OF 113 ADDED 1 OR MORE NEW MEMBERS

GENDER DISTRIBUTION

DROPPED MEMBERS

DECEASED	4
CLUB CANCELLED	96
OTHER	145
TOTAL	245

[CLICK HERE FOR CUMULATIVE MEMBERSHIP DATA](#)

MALE	2,690 (69.42%)
FEMALE	1,185 (30.58%)
NON BINARY	0 (0.00%)
PREFER NOT TO ANSWER	0 (0.00%)

TOTAL FAMILY UNIT MEMBERS 1,856

FAMILY MEMBERS PAYING HALF DUES 1,222